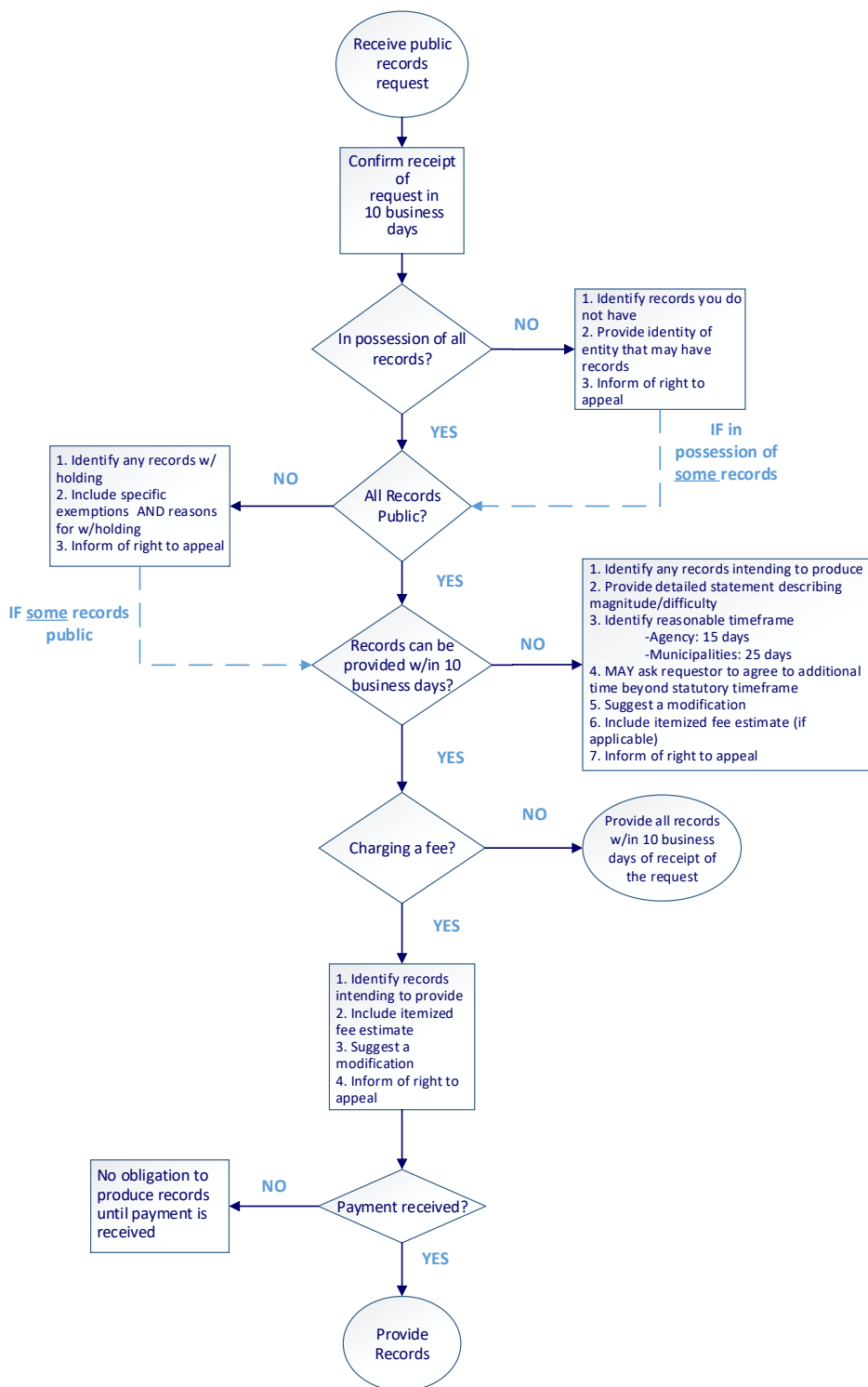


Initial Response Flow Chart



*PLEASE NOTE this is intended for instructional purposes only. For specific questions, you may contact the Secretary of the Commonwealth's Public Records Division at pre@sec.state.ma.us or call 617-727-2832.



All of the determinations issued by the Supervisor are public and available on the Secretary of the Commonwealth's website at: www.sec.state.ma.us/pre

For more information on the Public Records Law, please read the Guide to the Massachusetts Public Records Law available at: www.sec.state.ma.us/pre/prepdf/guide.pdf.

For any questions about the Public Records Law, please contact the Secretary of the Commonwealth's Public Records Division at 617-727-2832 or pre@sec.state.ma.us.