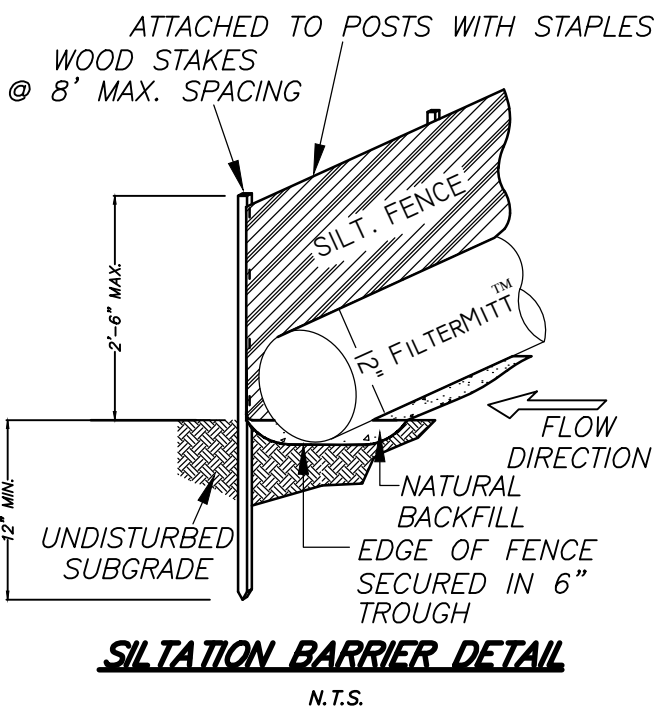


EROSION AND SEDIMENT CONTROL PLAN

1. THE LIMITS OF WORK SHALL BE MARKED IN THE FIELD PRIOR TO THE START OF CONSTRUCTION OR SITE CLEARING.
2. SEDIMENT AND EROSION CONTROL MEASURES SHALL BE IMPLEMENTED PRIOR TO ANY CONSTRUCTION ON THE SITE. SILTATION BARRIER AND SILT FENCE SHALL BE PLACED IN ALL AREAS AS SHOWN ON ALL THE PLANS AND IN ANY OTHER AREAS AS DETERMINED NECESSARY DURING CONSTRUCTION.
3. ALL SOIL STOCKPILES SHALL HAVE EROSION CONTROL MEASURES AROUND THEIR EDGES AT ALL TIMES. SOIL STOCKPILES SHALL BE COVERED WITH TEMPORARY VEGETATION OR FASTENED TAUPAULIN SHEETS.
4. PRIOR TO CONSTRUCTION, THE CONTRACTOR SHALL COORDINATE WITH THE TOWN TO CLEAN THE NOTED CATCH BASIN IN FRONT OF THE LOT.
5. ALL CATCH BASINS SHALL BE PROTECTED WITH SILT SACKS DURING CONSTRUCTION.
6. ALL CUT AND FILL SLOPES SHALL BE IMMEDIATELY COVERED WITH 6" OF LOAM AND SEEDED DURING THE GROWING SEASON (APRIL 1 TO NOVEMBER 1) OR COVERED WITH HAYMULCH DURING THE NON-GROWING SEASON (NOVEMBER 1 TO APRIL 1). IN AREAS SUBJECT TO THE WETLANDS PROTECTION ACT, THE HAYMULCH AND/OR REQUIRED MEASURES SHALL REMAIN IN PLACE UNTIL PERMANENT VEGETATION IS ESTABLISHED. UNLESS OTHERWISE INDICATED, ALL DISTURBED AREAS SHALL RECEIVE 6" OF LOAM AND BE SEED TO PREVENT EROSION.
7. THE SILTATION BARRIER SHALL BE MAINTAINED UNTIL VEGETATIVE COVER HAS BEEN SUITABLY ESTABLISHED AND GRADED SLOPES ARE STABLE. IN NO EVENT SHALL STRAW BALES BE PROPOSED OR UTILIZED FOR EROSION AND SEDIMENT CONTROL.
8. THE PARTY RESPONSIBLE FOR EROSION AND SEDIMENT CONTROL SHALL CONTROL FOR OTHER CONSTRUCTION WASTES SUCH AS DEMOLITION DEBRIS, LITTER AND SANITARY WASTES. NO CONSTRUCTION WASTE SHALL BE DISCHARGED TO THE SANITARY OR STORM SEWER SYSTEMS.
9. IN NO EVENT SHALL HAYBALES BE PROPOSED OR UTILIZED FOR EROSION AND SEDIMENT CONTROL. APPROVED EQUAL PRODUCTS SUCH AS EROSION CONTROL STRAW WATTLES ARE REQUIRED AND SHALL BE APPROVED BY THE IMPLEMENTING AUTHORITY PRIOR TO INSTALLATION.

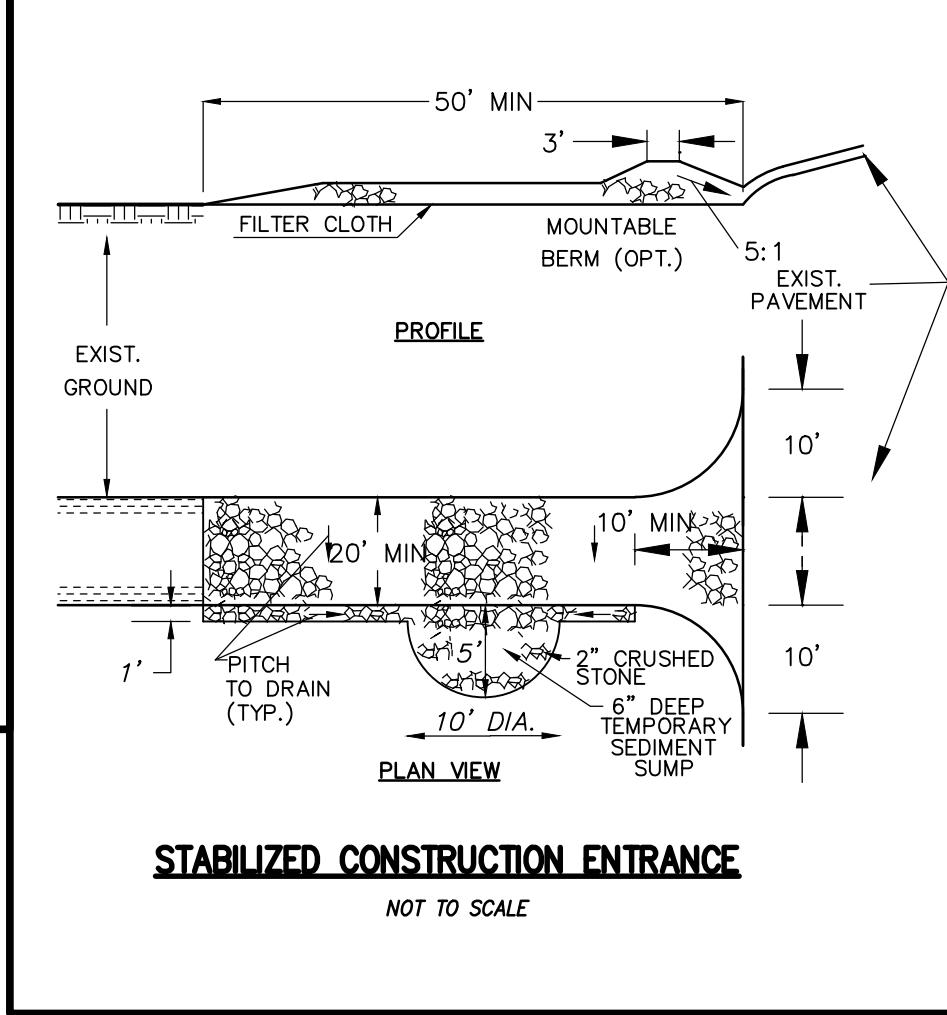
GENERAL NOTES

1. ALL UNDERGROUND UTILITIES SHOWN HEREON WERE COMPILED ACCORDING TO AVAILABLE RECORD PLANS FROM VARIOUS UTILITY COMPANIES AND PUBLIC AGENCIES AND ARE APPROXIMATE ONLY. ACTUAL LOCATIONS MUST BE DETERMINED IN THE FIELD BEFORE EXCAVATING, BLASTING, INSTALLING, BACKFILLING, GRADING, PAVEMENT RESTORATION OR REPAIRING. ALL UTILITY COMPANIES, PUBLIC AND PRIVATE, MUST BE CONTACTED INCLUDING THOSE IN CONTROL OF UTILITIES NOT SHOWN ON THIS PLAN. SEE CHAPTER 370, ACTS OF 1963 MASS. WE ASSUME NO RESPONSIBILITY FOR DAMAGE INCURRED AS A RESULT OF UTILITIES OMITTED OR INACCURATELY SHOWN. BEFORE PLANNING FUTURE CONNECTIONS, THE APPROPRIATE PUBLIC UTILITY ENGINEERING DEPARTMENT MUST BE CONSULTED. DIG-SAFE TELE. NO. (888) 344-7233.
2. UNLESS OTHERWISE SPECIFIED ON THESE PLANS, ALL CONSTRUCTION METHODS AND MATERIALS SHALL COMPLY WITH SPECIFICATIONS OUTLINED IN THE TOWN OF BOXBOROUGH RULES AND REGULATIONS GOVERNING THE SUBDIVISION OF LAND.
3. ALL LIMITS OF WORK SHALL BE LOCATED IN THE FIELD PRIOR TO CONSTRUCTION OR SITE CLEARING.
4. CONSTRUCTION DEBRIS SHALL BE PROPERLY REMOVED.
5. ANY FILL MATERIAL USED SHALL BE FREE OF HAZARDOUS MATERIALS OR WASTE.
6. CONTRACTOR TO SECURE VALID DIGSAFE NUMBER PRIOR TO REQUESTING CONSTRUCTION LAYOUT.
7. CONSTRUCTION ENTRANCE TO BE DETERMINED.
8. LOAM AND SEED ALL DISTURBED EARTHEN SURFACES.



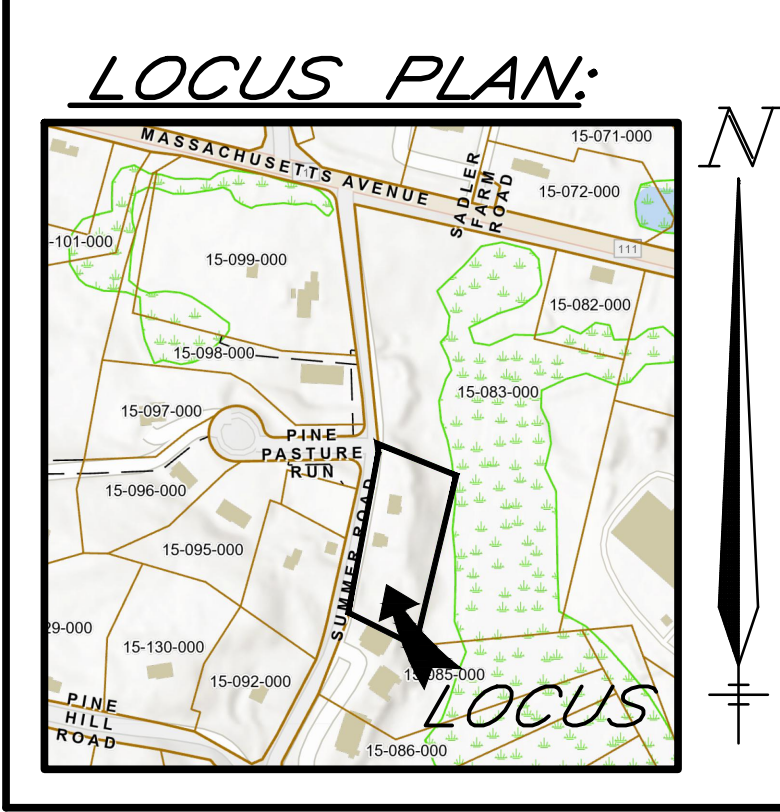
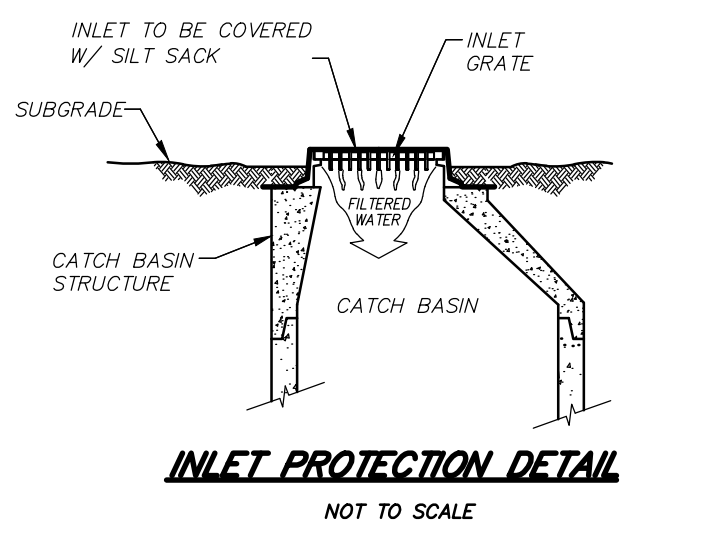
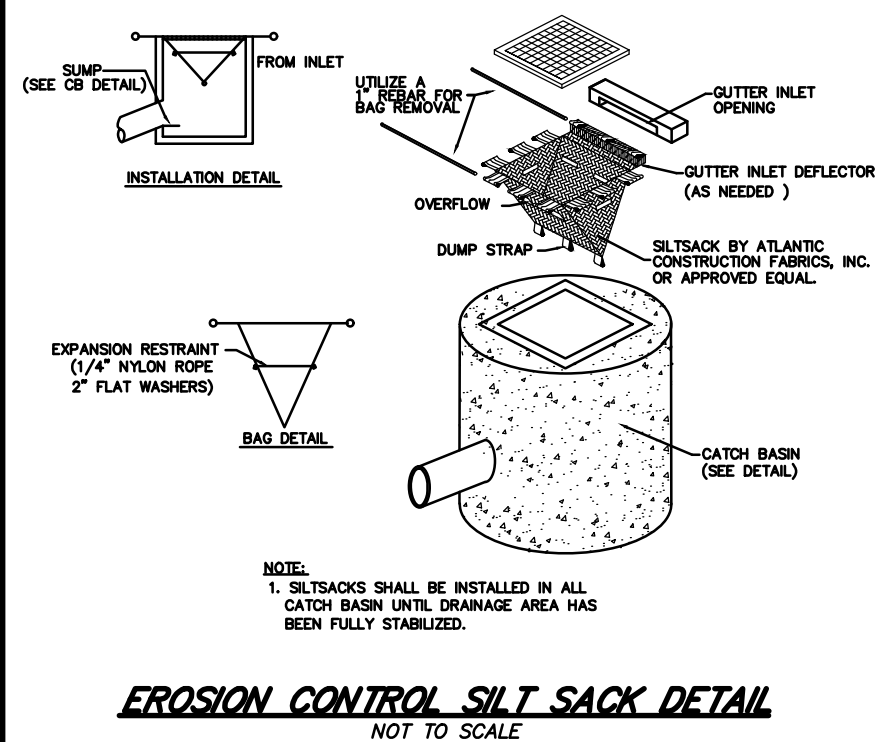
LEGEND:

- N/F NOW OR FORMERLY OVERHEAD WIRES  
OHW TREE  
UP TREE LINE  
GG GAS GATE  
G GAS SERVICE (BURIED)  
WG WATER GATE  
W WATER SERVICE (BURIED)  
DMH DRAIN MANHOLE  
D SUB-SURFACE DRAIN LINE  
---99--- EXISTING CONTOUR  
---95--- EXISTING CONTOUR  
\* LIGHTPOLE  
99X9 WETLAND FLAG  
99X9 SPOT ELEVATION  
STONE WALL



CONSTRUCTION SPECIFICATIONS

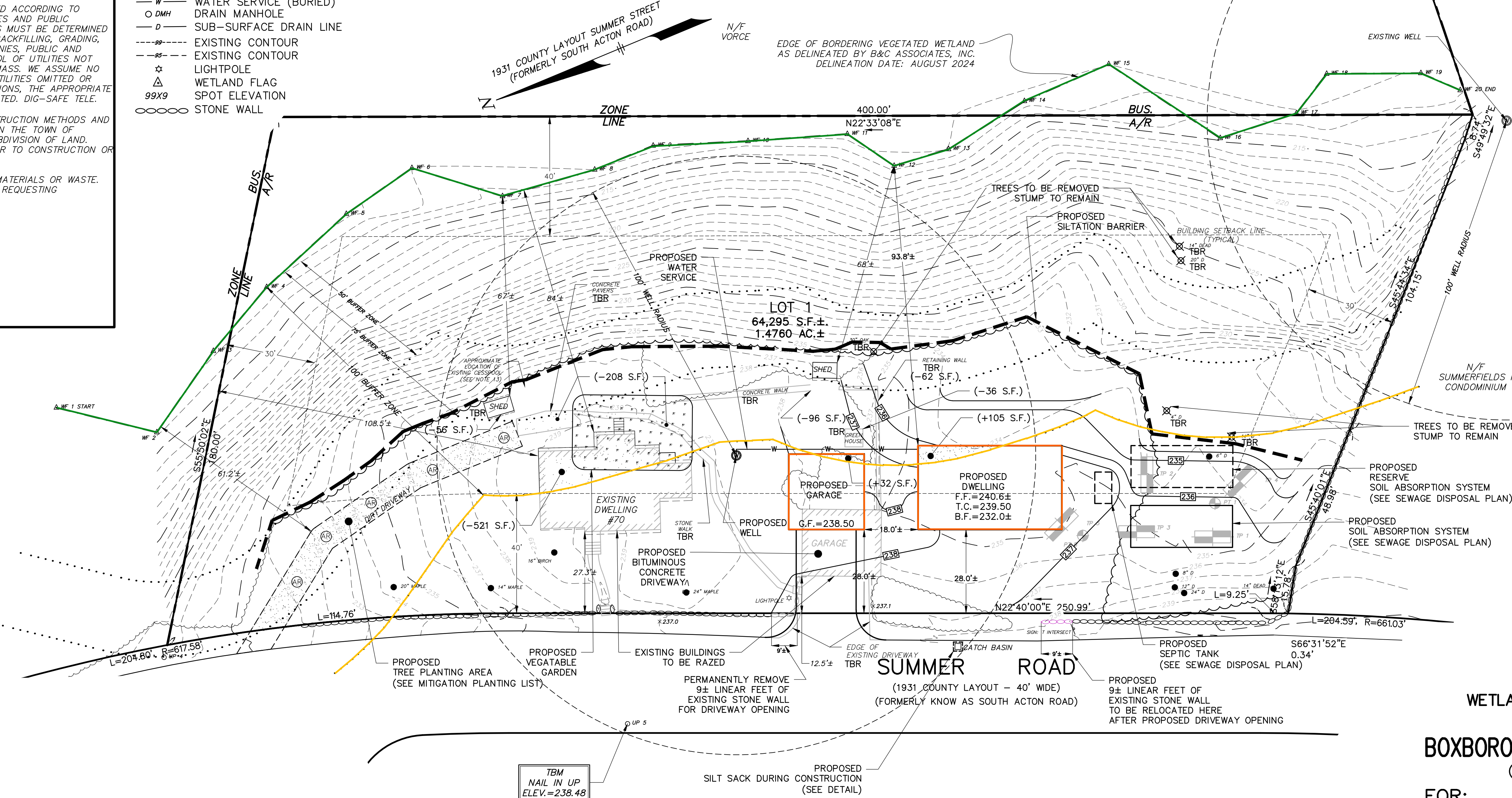
1. THE ENTRANCE OF THE PROPOSED DRIVEWAY SHALL INITIALLY HAVE 6" OF 2" CRUSHED STONE LAID DOWN AS A TRAFFIC SEDIMENT CONTROL SURFACE AS SHOWN IN THE STABILIZED CONSTRUCTION ENTRANCE DETAIL. THIS STONE PACK SHALL BE PLACED OVER THE DRIVEWAY FOR A MINIMUM DISTANCE OF 40 FEET FROM THE EDGE OF PAVEMENT AND SHALL BE REMOVED AND REPLACED WITH ROADWAY GRAVEL IMMEDIATELY PRIOR TO THE PLACEMENT OF PAVEMENT.
2. STONE SIZE - USE 2" CRUSHED STONE.
3. WIDTH - TWENTY (20) FOOT MINIMUM, BUT NOT LESS THAN THE WIDTH AT POINTS OF INGRESS OR EGRESS.
4. FILTER CLOTH - WILL BE PLACED OVER THE ENTIRE AREA PRIOR TO THE PLACEMENT OF STONE.
5. SURFACE WATER - ALL SURFACE WATER FLOWING OR DIVERTED NEAR CONSTRUCTION ENTRANCES SHALL BE PIPED ACROSS THE ENTRANCE. IF PIPING IS IMPRACTICAL, A MOUNTABLE BERM WITH 5:1 SLOPES WILL BE PERMITTED.
6. MAINTENANCE - THE ENTRANCE SHALL BE MAINTAINED IN A CONDITION WHICH WILL PREVENT TRACKING OR FLOWING OF SEDIMENT ONTO PUBLIC RIGHT-OF-WAYS. THIS MAY REQUIRE PERIODIC TOP DRESSING WITH ADDITIONAL STONE AS CONDITIONS DEMANDS AND REPAIR ANY MEASURES USED TO TRAP SEDIMENT.
7. WASHING - WHEELS SHALL BE CLEANED TO REMOVE SEDIMENT PRIOR TO THE ENTRANCE ONTO PUBLIC RIGHT-OF-WAYS. WHEN WASHING IS DONE IT SHALL BE DONE ON STABILIZED ENTRANCE WITH STONE AND WHICH DRAINS INTO THE SEDIMENT SUMP AS SHOWN.
8. PERIODIC INSPECTION AND NEEDED MAINTENANCE SHALL BE PROVIDED AFTER EACH RAIN STORM.



MITIGATION PLANT LIST

SYMBOL/BOTANICAL NAME	COMMON NAME	NO.	SIZE
●	EXISTING TREE TO REMAIN	AS LISTED IN PLAN VIEW	
AS	ACER RUBRUM	RED MAPLE	5 84" HT.

NOTE:  
ALTERNATIVE SPECIES MAY BE UTILIZED WITH  
CONSERVATION COMMISSION APPROVAL.



WETLAND PERMITTING PLAN  
IN  
BOXBOROUGH, MASSACHUSETTS  
(MIDDLESEX COUNTY)

FOR: DOUGHTY  
SCALE: 1"=20' JANUARY 15, 2025  
REVISED: MAY 12, 2025

STAMSKI AND McNARY, INC.  
1000 MAIN STREET ACTON, MASSACHUSETTS  
ENGINEERING - PLANNING - SURVEYING

0 10 20 40 60 80 FT

(7630.SITE.G.dwg) 70 Summer Road SM-7630