



TOWN OF BOXBOROUGH
COMMUNITY PRESERVATION COMMITTEE
FINAL APPLICATION (COVER SHEET) FOR CPA FUNDING

Applicant: Hilary Greven

Applicant's Address: 328 Hill Rd, Boxborough, MA

Applicant's Email: hgreven@boxborough-ma.gov

Applicant's Phone: 508-243-8452

Town Committee (if applicable): Boxborough Recreation Commission

Project Name: Final Playground Improvements to Flerra

Purpose (select all that apply):

Open Space _____ Recreation X _____ Community Housing _____ Historic Resources _____

Project Budget

CPA Funds Requested \$ 300,000

Amount of Other Funding \$ BD, any additional funding obtained will offset the CPA funds request

Total Project Budget \$ 300,000

(If this is a multi-year project, present the costs for the first fiscal year.)

Estimated Date of Project Commencement: August 2026

Estimated Date of Project Completion: November 2026

For Historic Resources Projects Only – Please check the box below to acknowledge the accompanying statement.

☐

I/We have read the US Secretary of the Interior's Standards for the Treatment of Historic Properties and understand that planning for, and execution of, this project must meet these standards.

Signature of Applicant: Hilary Greven

Date: 30 Oct 2025

Signature of Property Owner (if different): _____ Date: _____

Submit Completed Final Applications To: Boxborough Community Preservation Committee, c/o Planning Department, Town Hall, 29 Middle Road, Boxborough, MA 01719. Final Applications should be received no later than 4:00 PM on Thursday, October 30, 2025.

For CPC Use: Received Nov. 7 2025

CPC Reference Number: FY27-05

**Final Application for the Boxborough Community Preservation Act Funding: Final
Playground Improvements to Flerra (FY 2027)**

1. Brief Project Summary

The Boxborough Recreation Commission (Commission) is seeking CPA funding to complete the playground improvements at Flerra by replacing the original main large structure and swing set. This project would also include required ADA surfacing per Massachusetts law.

The playground at Flerra was built 27 years ago in 1999 and the Recreation Commission has been gradually making improvements via CPA funding: FY 2019- removed broken pieces, added new standalone equipment and added seating; and installed a new fence in FY 2020.

The Recreation Commission presented this project at the 2025 Capital Planning Meeting and was advised by the Selectboard and Finance Committee to seek CPA funding.

The Commission is estimating this project will cost \$264,00. A near 14% contingency is added to cover unexpected costs which would be \$36,000. The estimated combined total that the Commission is asking for is \$300,000.

2. Narrative

The Flerra playground sees much use from children attending Summer Playground; Kindergarten Meet-ups; families attending soccer and baseball games and practice; and parents/caregivers seeking outdoor activity for their children. The playground was built in 1999 with the equipment purchased completely with private funds raised by the now defunct Boxborough Family Network.

In 2018, the Commission began making improvements to the existing playground at Flerra by removing broken equipment and replacing it with new, more exciting equipment, adding an area of interest for toddlers and younger children and adding a rope climbing structure for older children. The Commission was also able to add a few benches and tables. In 2020, the Commission replaced the fencing on the outside of the playground. Now, seven years later, the Commission is hoping to complete the remaining updates needed to Flerra playground by replacing the main structure from 1999 and adding ADA surfacing (engineered wood fiber covered with ADA safety mats) which will allow access to all and ensure compliance with MA law.

In October 2016, a playground inspection of Flerra was conducted by the Massachusetts Interlocal Insurance Association. Several deficiencies and areas for improvement were identified; some of which have been addressed by the aforementioned improvements. Others listed below will be addressed with this request for funding:

- Making it accessible for those with disabilities (Americans with Disabilities Act [ADA] compliance)

Final Application for the Boxborough Community Preservation Act Funding: Final Playground Improvements to Flerra (FY 2027)

- Lowering the collars on platform leading to the bridge on the south side of the structure 1 inch to eliminate head entrapment hazard (*Note: this will be accomplished by replacing the main large structure*).

3. Maps

The location of this project is at Flerra Meadows which is located at 400 Stow Road in Boxborough.

4. CPC Selection Criteria and Needs Assessment

This project qualifies for Community Preservation Act (CPA) funding under the Open Space and Recreation category and meets the following Recreation Goal listed in the Community Preservation Plan: update and/or redesign the existing playground at Flerra Field.

The Commission believes that this project addresses the following objectives identified in the Boxborough 2030 Plan:

- Strategy 3.4.4. Coordinate with the Community Preservation Committee and identify opportunities to use CPA funding for local historic preservation, open space, recreation, and housing production projects.
- Goal 4.3. Enhance the quality and variety of recreation programs and facilities to meet current and future demand among all age groups and levels of ability.
- Strategy 4.3.1. Address known recreational needs by upgrading or developing new facilities when feasible.
- Strategy 4.3.2. Improve accessibility of facilities per Massachusetts Department of Transportation (Mass DOT) and Americans with Disabilities Act (ADA) guidelines.

5. Budget

The Commission is estimating this project will cost \$264,00. A near 14% contingency is added to cover unexpected costs which would be \$36,000. The estimated combined total that the Commission is asking for is \$300,000.

Please refer to the attached files itemizing each cost broken down into 1) Equipment, 2) Surfacing and 3) Installation.

To note, this estimate takes into account a discount that Boxborough can receive (a 9% discount off retail price on playground equipment) through the MA state program CommBuys. CommBuys is an existing program under the Commonwealth of MA. Per the CommBuys website (<https://www.commbuys.com/bso/>), “CommBuys is the only official procurement record system for the Commonwealth of Massachusetts' Executive Departments. CommBuys offers free internet-based access to all public procurement information posted here in order to promote

Final Application for the Boxborough Community Preservation Act Funding: Final Playground Improvements to Flerra (FY 2027)

transparency, increase competition, and achieve best value for Massachusetts taxpayers.” CommBuys was used to purchase the playground and adult fitness equipment at Liberty and the newer equipment at Flerra.

Additionally, the playground manufacturer has added a 1% discount off equipment and a 10% discount on surfacing and installation because we have used them in the past for Flerra and Liberty; and the playground at Blanchard was built with Kompan equipment.

This estimate also assumes that DPW or volunteers will be able to help in removing and disposing of existing equipment.

6. Feasibility

The Commission is proposing to modify already existing recreation space and playground.

7. Sustainability

Sustainability and the environment are very important to Kompan, the manufacturer of the playground equipment. Kompan is the holder of the most recognized green certificates (ISO 9001, ISO 14001 and OHSAS 18001). Kompan products are made from recycled materials such as recyclable steel and aluminum, and Forest Stewardship Council (FSC) certified wood. Their equipment is easy to separate into their different constituent materials and then recycle or dispose of when they reach the end of their lifecycle. Depending on the component, parts of equipment come with either a lifetime or 10-year warranty.

8. Timeline

Activity	Duration	Date(s)
Town Meeting Approval		May 2026
Signed Work Order for Equipment (\$\$ not needed at this time)		May 2026
Receive Equipment	currently 14-16 weeks	September 2026
Remove existing equipment	3 business days	September 2026
Prep area and install new equipment	5-10 business days	September-early October 2026
Open playground for use		Mid-October 2026

9. Architectural Plans, Site Plans, Photographs, etc.

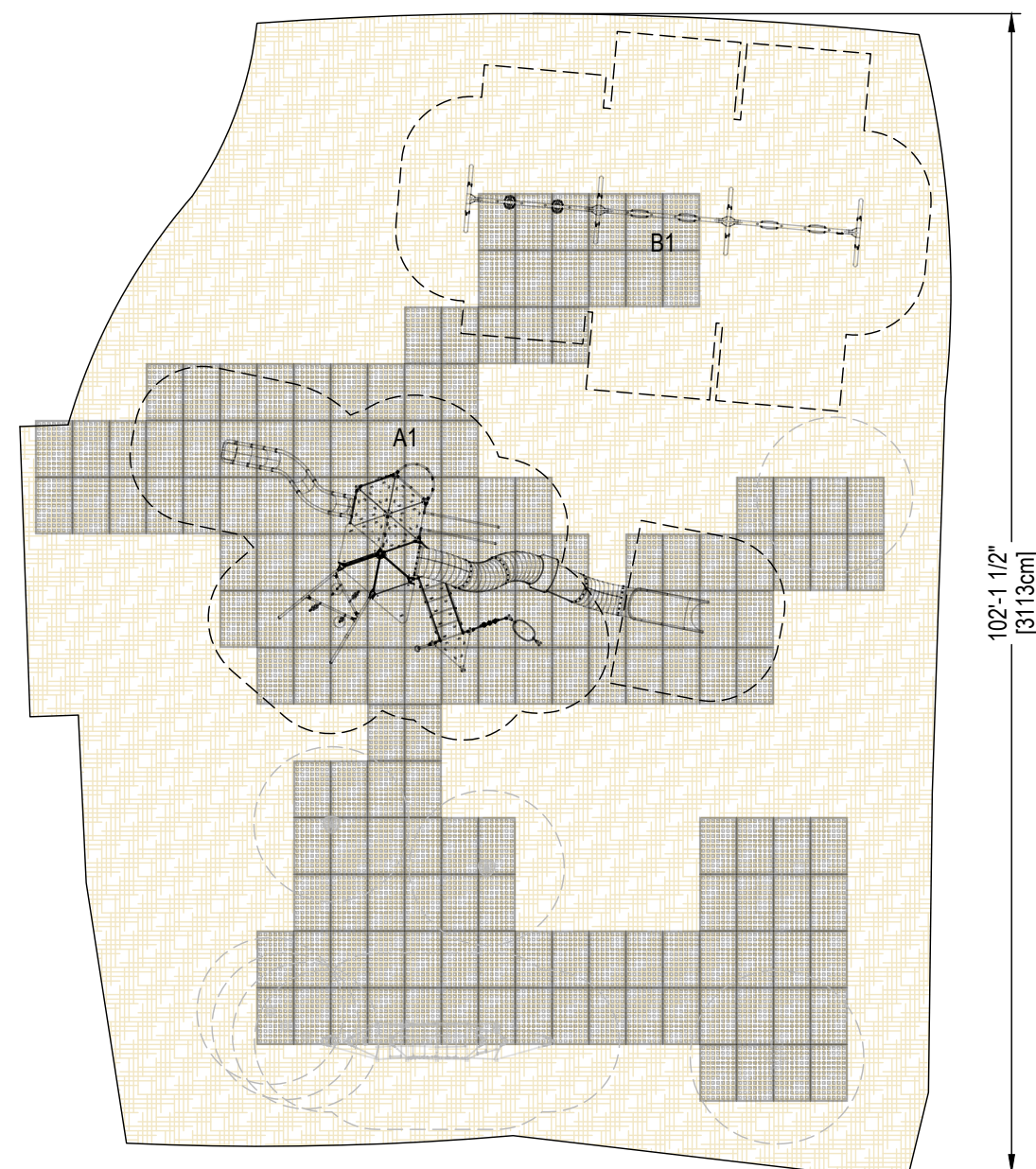
Please refer to the following attachments:

**Final Application for the Boxborough Community Preservation Act Funding: Final
Playground Improvements to Flerra (FY 2027)**

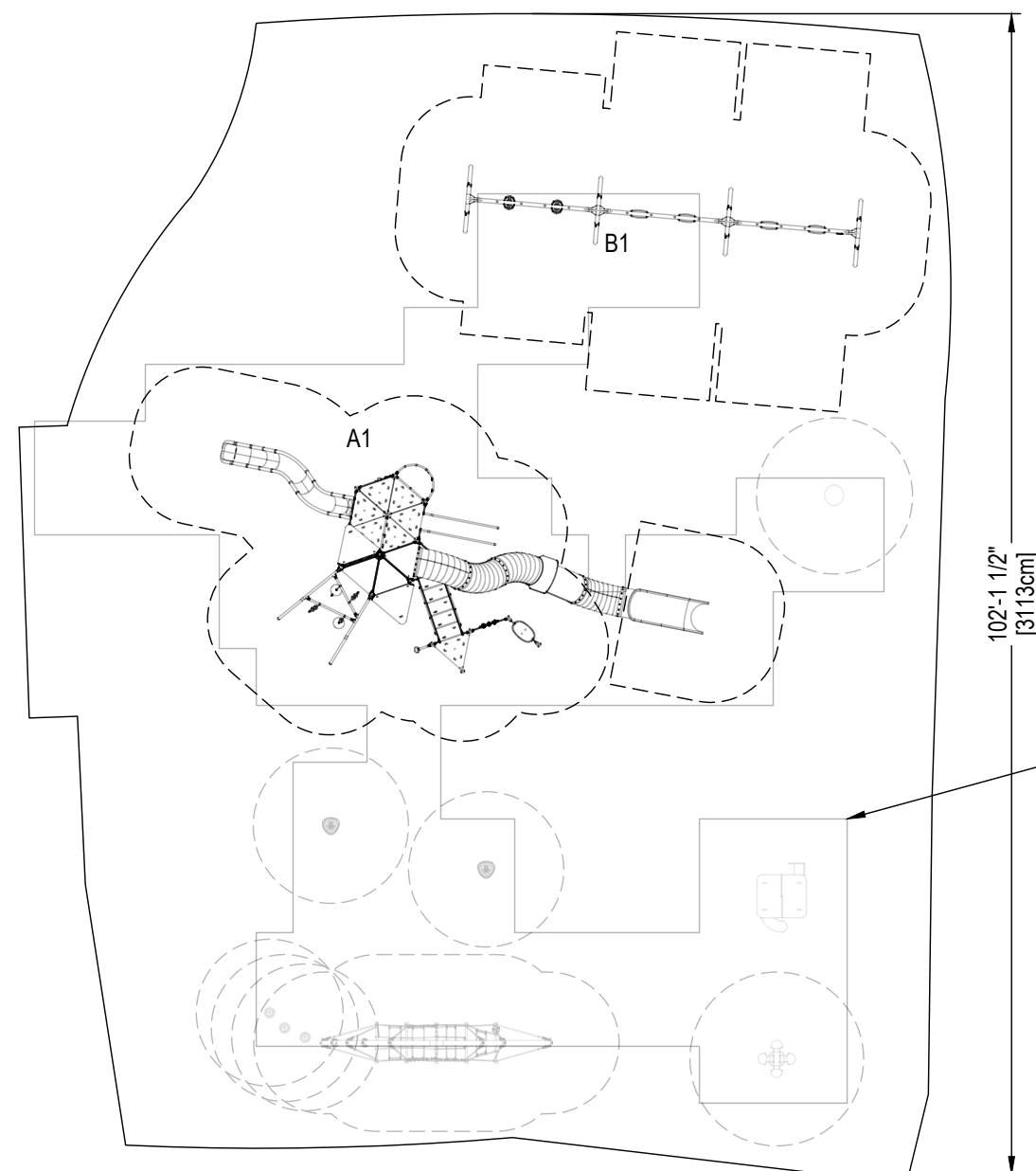
- Product Details
- Product Warranty
- Preliminary Site Plan
- Surfacing Photos

10. Letters of Support

Once the Commission has submitted this final application and it has been accepted by CPC, the Commission intends on receiving several letters of support.



C1-C164



STEPPING FORMS FOR 5-12 AGE GROUP SHALL BE NO GREATER THAN 18" FROM EDGE TO EDGE PER ASTM1487.8.15.6

LOCATION AND DETAILS OF EXISTING OR THIRD PARTY EQUIPMENT MUST BE CONFIRMED BY OWNER/OPERATOR TO ENSURE COMPLIANCE

DUE TO THE PRESENCE OF THIRD PARTY OR EXISTING PLAY EQUIPMENT, ADA COMPLIANCE SHALL BE THE RESPONSIBILITY OF THE SITE OWNER / OPERATOR.

ADA ACCESSIBLE PATH TO SITE IS REQUIRED, PER 2010 ADA STANDARDS (SECTION 206)

MAINTENANCE OF ASTM F1951 COMPLIANT LOOSE FILL SURFACING IS THE RESPONSIBILITY OF THE SITE OWNER TO ENSURE ADA REQUIREMENTS FOR PATH OF TRAVEL.

EWf AREA: 7309 SF

EXTENT OF ADA MATS

#	Product Number	Product Name	M.F.H.	Count
A	PCT110931-CUSTOM_20410433	Custom Giant L	9' 4"	1
B	KSW926-CUSTOM_20359512	3 Bay Swing	7' 11"	1
C	USPS-ADA-MAT	Playground Surfacing Mat	0' 0"	164

FLERRA MEADOWS OPTION 2

400 Stow Road
Boxborough, MA
Site Plan - 2-5 & 5-12



MANUFACTURER'S SHOP DRAWING:

FOR USE BY CONTRACTOR, ENGINEER, OR DESIGN PROFESSIONAL OF RECORD. SEE SIGNED SALES PROPOSAL FOR COMPLETE SCOPE TO BE PROVIDED BY KOMPAN OR REPRESENTING AGENCY. CONFIRM FINAL PLAN AND SCOPE WITH KOMPAN SALES REP OR PROJECT MANAGER PRIOR TO USE FOR REVIEW, PERMITTING, OR CONSTRUCTION.

TO BE READ CONTINGENTLY WITH KOMPAN'S STANDARDS FOR SITE PREPARATION, MATERIALS AND INSTALLATION PROCESSES. PROVIDED AFTER EQUIPMENT PURCHASE. A COMPLIANT PLAYGROUND TO KOMPAN'S STANDARDS MUST SATISFY ALL REQUIREMENTS IN THE CODE OF CONDUCT.

SLAB BY OTHERS UNLESS OTHERWISE NOTED. FOR SURFACE MOUNT OPTIONS, THE CONCRETE REQUIREMENTS MAY BE UP TO 51/2" OF 3,500 PSI MINIMUM COMPRESSIVE STRENGTH. CONTACT KOMPAN FOR SPECIFIC PRODUCT REQUIREMENTS. ALL COMPOSITE STRUCTURES SHOWN REQUIRE A SITE GRADE OF 2% MAXIMUM, 1% OPTIMAL. SPECIFICATIONS FOR EACH KOMPAN STRUCTURE MAY BE FOUND AT KOMPAN.COM/KOMPANMASTER

DIMENSIONS OF PLAY AREA, SIZE AND ORIENTATION, LOCATIONS OF ALL EXISTING UTILITIES, EQUIPMENT AND SITE FURNISHINGS TO BE FIELD VERIFIED PRIOR TO CONSTRUCTION.

PREPARED AND PRINTED IN USA BY KOMPAN © 2025 KOMPAN, INC. AUSTIN, TX. USA 800-426-9788



SALES REPRESENTATIVE			SHEET
Perry Trachten			K1.0-2
REVIEW BY	DRAWN BY	DATE	REVISION NOTES
DESIGN	JohnSt	09/11/2025	
REV. NO.	REV. BY	REV. DATE	REVISION NOTES
2	JohnSt	10/02/2025	Second Option

LAYOUT IS IN ACCORDANCE WITH ASTM F1487

Swing Frame, 6 Seat, 8 ft H

KSW926



Item no. KSW926-0910	
General Product Information	
Dimensions LxWxH	34'9"x6'0"x8'4"
Age group	2 - 12
Capacity (users)	-
Color options	



KOMPAN Portal swings are a modern update on a traditional favorite, constructed from galvanized steel. They are configurable for the unique needs and requirements of every playground site. All Portal swings come standard in 7", 8" or 10" heights with posts made from hot dip galvanized steel. For swing seats, we offer as standard a rubber swing

seat, baby seat, or toddler swing seat for individual use, or the duo swing seat, birds nest, or you & me swing seat for multiple users. The seats are available with either hot dip galvanized chains or stainless steel chains with the option of antiwrap suspension. The modular swing system is also available in multibay configurations with 2, 3, 4 or more sections.

Swing Frame, 6 Seat, 8 ft H

KSW926



Item no. KSW926-0910		
Installation Information		
Total installation time	11.1 hours	
Excavation volume	2.93yd³	
Concrete volume	0yd³	
Footing depth (standard)	2'11"	
Shipment weight	862lbs	
Anchoring options	In-ground	✓
Warranty Information		
Post	10 Years	
Hot dip galvanized steel	Lifetime	
Movable parts	2 Years	
Spare Parts Availability	10 Years	

ASTM
F1487
compliant

Sustainability Data

KSW926



Cradle to Gate A1-A3	Total CO ₂ emission	CO ₂ e/kg	Recycled materials
	kg CO ₂ e	kg CO ₂ e/kg	%
KSW926-0910	937.94	3.21	59.43

The overall framework applied for these factors is the Environmental Product Declaration (EPD), which quantifies "environmental information on the life cycle of a product and enable comparisons between products fulfilling the same function" (ISO, 2006). This follows the structure and applies a Life-Cycle Assessment approach to the entire Product stage from raw material through manufacturing (A1-A3))

Kompan A/S

C.F. Tietgens Boulevard 32C
DK-5220 Odense SØ
Denmark



Verification of CO₂ calculation of: Freestanding play equipment



Data version no. 2023-10-05

The CO₂ calculation and data are in compliance with the principles of a carbon footprint impact according to the GHG protocol (Greenhouse Gas Protocol), Scope 3, cradle to gate related to all individual components in the product category: "Freestanding play equipment" represented by item no.: KSW92011-0910.

(Scope 3 emissions include emission sources in the upstream and downstream value chain).

Date: 30. October 2023 | Valid until: 30. October 2025

Verified by:

Julie Marie Vejsgaard Larsen, LCA & EPD Consultant

Verification based on report: Validation of CO₂ calculation of 9 categories of Kompan product line, version 1.0, prepared by: Bureau Veritas HSE, Denmark: Julie M. V. Larsen.

Publication date: 30. October 2023


By Bureau Veritas HSE
www.bureauveritas.dk
+45 7731 1000



Giant L Base

PCT110931



Item no. PCT110931-0902	
General Product Information	
Dimensions LxWxH	29'10"x36'5"x21'4"
Age group	5 - 12
Play capacity (users)	36
Color options	



WOW! The Giant L's sky-high climb-slide-meet features attract children hugely. The Giant has a unique variety of speedy sliding, gentle swaying, and challenging climbing activities. All these are in a see through tower, promoting thrill and social interaction. This ensures vigorous play, over and over. The slides are main attractions. The open and closed slides

offer a thrilling ride. This is severe fun and stimulates social-emotional skills, such as self-regulation and empathy. The varied climbing activities add choice for all. The speedy stairs train cardio. The tower net and steep steps train cross-coordination, muscles, and the sense of space. Play shells, talking tube, hammock, and tic-tac-toe create an inviting

ground level space for meeting and socializing, with rich opportunities for all to participate and make friends in play.



Giant L Base

PCT110931



Peak climber

Physical: cross coordination and muscle strength are developed when climbing and crawling across the unequally dispersed ropes. Balance and spatial awareness are supported when standing on turning spheres or climbing across or up. **Social-Emotional:** turn-taking and socializing skills are supported when sitting with friends and interacting across.



Long tube slide

Physical: sliding develops spatial awareness and the sense of balance. **Social-Emotional:** the height ensures extra speed and thrill. Empathy stimulated by turn-taking and consideration of others. Feeling of security when stopping on extra long slide mouth.



Transparent panels

Social-Emotional: the see-through panel makes it possible to watch and contact friends at ground level while up high. **Cognitive:** the see-through effect adds a feeling of thrill when used up high.



Tower net

Physical: the children have quick access up the horizontal rungs, and a slower climb up the sloping rungs. The net can be climbed from both sides, levelling the challenge of accessing the platform. Cross coordination and sense of space is supported, as well as arm and leg muscles. **Social-Emotional:** the two-sided net allows for social interaction. The size invites socializing. **Cognitive:** logical thinking when planning how to best enter the platform from the net.



Large hammock

Physical: sense of balance when swaying, body pressure when lying. Support users lying or seated. **Social-Emotional:** meeting, pushing friends gently back and forth, turn-taking.



Banister bars

Physical: coordination is supported when going down, as well as arm and core muscles. Landing strengthens bone density, which is built for life in childhood. **Social-Emotional:** turn-taking and risk-taking.



Tic-tac-toe panel

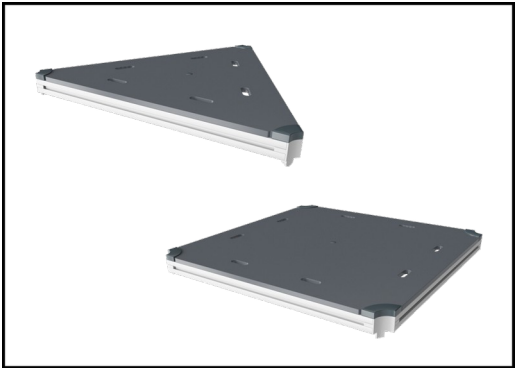
Social-Emotional: stimulates communication and turn-taking skills. **Cognitive:** support rules understanding, strategic thinking. **Creative:** leaving marks when tumblers are left in new positions.

Giant L Base

PCT110931



Panels of 19 mm EcoCore™. EcoCore™ is a highly durable, eco-friendly material, which is not only recyclable after use, but also consists of material produced from +95% recycled post-consumer material from food packing waste.



All decks are supported by uniquely designed, low-carbon aluminum profiles with multiple attachment options. The grey-colored molded decks are made of 75% post-consumer waste PP material with a non-skid pattern and texture surface.



The main posts have an alloy with improved tensile and yield strength to ensure superior structural integrity of the high towers. The posts has hot dip galvanized base and powder coated top finish which ensure long lifetime.

Item no. PCT110931-0902	
Installation Information	
Max. fall height	9'4"
Safety surfacing area	1192ft²
Total installation time	152.8 hours
Excavation volume	17.47yd³
Concrete volume	7.68yd³
Footing depth (standard)	2'11"
Shipment weight	5339lbs
Anchoring options	In-ground ✓ Surface ✓
Warranty Information	
EcoCore HDPE	Lifetime
Steel post HDG	Lifetime
PP Decks	10 Years
Ropes & nets	10 Years
Spare Parts Availability	10 Years



High-quality polycarbonate with a thickness of 15mm. The graphic prints are added by a unique multi-layer print process where the inner layer is the image and outer transparent layer functions as protection. Both PC panel and the water-based lacquer are UV stabilized to prevent fading.



Fully welded steel frame with 45° cross welded steel grid of round steel pins with a diameter of 4mm. The airflow panel contributes to the overall structural integrity of the GIANT towers.



Curved and straight tunnel slide of either PE or stainless-steel material and supported by multiple steel rods to a center steel post. The tunnel slides are designed with perfect curve and inclination for a playful ride.

Elevated activities 11	Accessible elevated activities	Accessible ground level activities	Accessible ground level play types
Present	8	4	3
Required	6	4	3

**ASTM
F1487**
compliant

Sustainability Data

PCT110931



Cradle to Gate A1-A3	Total CO ₂ emission	CO ₂ e/kg	Recycled materials
	kg CO ₂ e	kg CO ₂ e/kg	%
PCT110931-0902	9,115.27	4.38	52.95

The overall framework applied for these factors is the Environmental Product Declaration (EPD), which quantifies "environmental information on the life cycle of a product and enable comparisons between products fulfilling the same function" (ISO, 2006). This follows the structure and applies a Life-Cycle Assessment approach to the entire Product stage from raw material through manufacturing (A1-A3))

Kompan A/S

C.F. Tietgens Boulevard 32C
DK-5220 Odense SØ
Denmark



Verification of CO₂ calculation of: Play systems



Data version no. 2023-10-05

The CO₂ calculation and data are in compliance with the principles of a carbon footprint impact according to the GHG protocol (Greenhouse Gas Protocol), Scope 3, cradle to gate related to all individual components in the product category: "Play systems" represented by item no.: PCM200321-0950.

(Scope 3 emissions include emission sources in the upstream and downstream value chain).

Date: 30. October 2023 | Valid until: 30. October 2025

Verified by:

Julie Marie Vejsgaard Larsen, LCA & EPD Consultant

Verification based on report: Validation of CO₂ calculation of 9 categories of Kompan product line, version 1.0, prepared by: Bureau Veritas HSE, Denmark: Julie M. V. Larsen.

Publication date: 30. October 2023

By Bureau Veritas HSE
www.bureauveritas.dk
+45 7731 1000

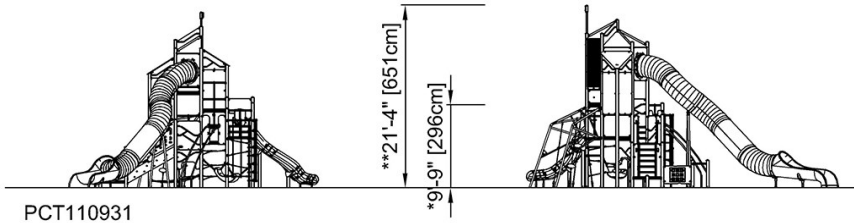
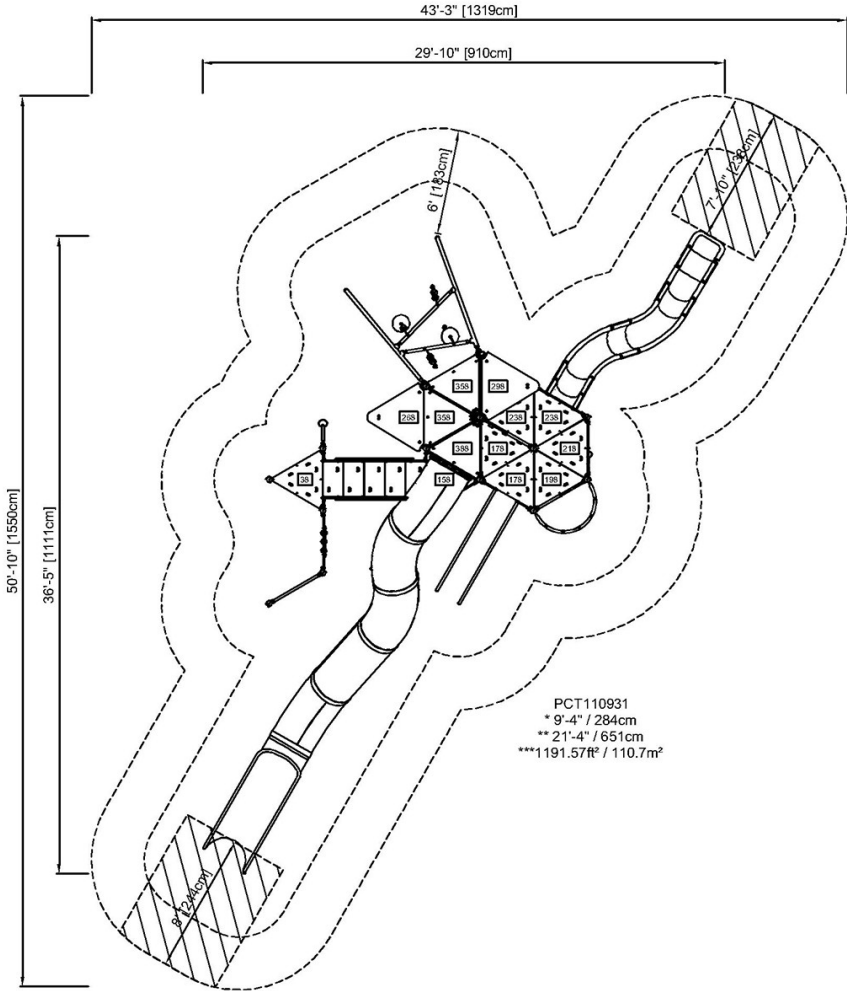


Giant L Base

PCT110931

* Max fall height | ** Total height | *** Safety surfacing area

* Max fall height | ** Total height



[Click to see TOP VIEW](#)

[Click to see SIDE VIEW](#)

Why Choose KOMPAN?

With KOMPAN, you can always count on top-tier materials and components, low-maintenance products, reliable aftermarket services, and comprehensive warranty coverage you can trust.

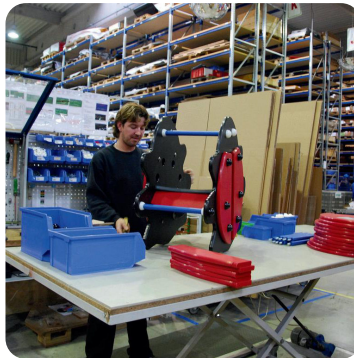


Premium Materials & Components



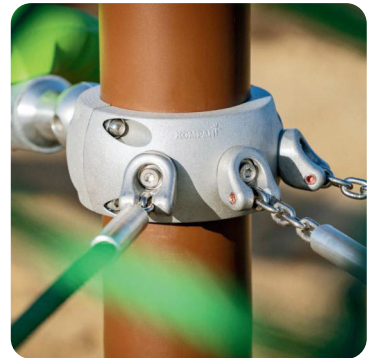
Nothing lasts forever, but our materials—including the steel-core ropes wrapped in six galvanized steel wires and tightly bound in PES yarn, along with the hot-dip galvanized steel clamps seen above—are engineered to stand the test of time.

Low Maintenance Requirement



Quality is high, maintenance is low, and safety is guaranteed. That's what you can expect from a KOMPAN playground. If an issue arises, our reliable aftermarket services, including spare part replacement, are always there to support you.

Comprehensive Warranty Coverage



At KOMPAN, we offer industry-leading warranty coverage. From steel to wood and everything in between, you can trust that our comprehensive warranties are crafted to ensure long-term performance and peace of mind.

WARRANTY

WE HAVE INDUSTRY-LEADING WARRANTIES



LIFETIME* Warranty

- Hot-Dip galvanized parts
- Stainless steel parts
- EcoCore™ and other high-density polyethylene (HDPE) parts

KOMPAN's LIFETIME warranty is in effect for the lifetime of the product until the product is uninstalled and/or taken out of use. In addition, KOMPAN's general terms & delivery conditions apply and supplement this warranty.



15-year warranty

- High-pressure laminate (HPL) parts
- Aluminum parts



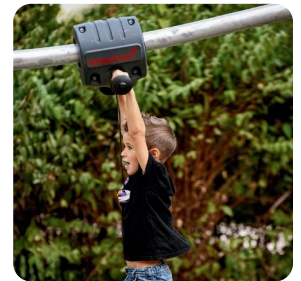
10-year warranty

- Painted surface on galvanized or aluminum metal parts
- Pre-galvanized posts with painted top layer
- Electro-galvanized metal parts
- Solid plastic parts
- Wood-plastic composite parts
- Robinia, Siberian larch, pine, & other wood types
- Stainless Steel Slides
- Transparent Poly Carbonate (PC) parts
- Hollow plastic parts
- Rope and net constructions



5-year warranty

- Resin coated plywood parts
- Springs & ball bearing assemblies
- Graphic print on transparent PC panels
- Concrete parts
- Galaxy connection balls



2-year warranty

- Moveable plastic & metal parts
- Rubber membranes
- Screens and electronic parts
- Sunshades & sail solutions
- Nylon nets
- Spare parts

WARRANTY COVERAGE

This warranty applies to KOMPAN's products and spare parts for the time periods described for each product type above and with the limitations described in this warranty. The warranty period applies from the date of purchase by the first customer. This warranty covers only defects in materials. KOMPAN's liability under this warranty is limited to repair or replacement of defective products, without charge, at KOMPAN's discretion.

PROPER INSTALLATION AND MAINTENANCE

The warranty only applies if KOMPAN's products have been installed according to the instructions provided by KOMPAN and maintained correctly according to the KOMPAN Maintenance Manual. The warranty for the ICON electrical components are dependent on those products being installed by an ICON trained and approved installer.

WARRANTY EXCLUSIONS

This warranty does not cover any damage caused by accident, improper care, negligence, normal wear and tear, surface corrosion on metal parts, discolored surfaces and other cosmetic issues or failures due to misuse or vandalism. Natural changes in wood over time are considered cosmetic issues and not covered.

SAFETY STANDARDS

In the interest of playground safety, the International Play Equipment Manufacturers Association (IPEMA) provides a Third Party Certification service whereby a designated independent laboratory, TOV SUD Amenia Inc., (TUV), validates an equipment manufacturer's certification of conformance to the ASTM F1487 standard Consumer Safety Performance Specification for Playground Equipment for Public Use, except sections 7.1.1, 10, 13.1.1, 13.1.2, 13.2, and 13.3; lo CAN/CSA Z614 Children's Playplaces and Equipment, except clauses 10 and 11; or both. A list of current validated products and components may be viewed at www.ipema.org.

NEAR WATER INSTALLATIONS

Products installed in direct contact with chlorinated water or saltwater (waterparks), or products installed within 650 feet from the shore are not covered by the KOMPAN warranty for any defects caused by corrosion. Specially designed products (handled Variant department for customized products and upgraded to corrosion class C4) installed within 650 feet from the shore will be covered by 5 years of warranty in relation to structural defects caused by corrosion.

THIRD-PARTY SUPPLIED PRODUCTS & SERVICES

KOMPAN provides non-KOMPAN branded products and installation services performed by certified third-party suppliers. This general KOMPAN warranty does not apply to such non-KOMPAN branded products and installation services, which may carry their own warranties. KOMPAN will pass on information on such warranties where possible.

FREIGHT AND WAREHOUSING

Global transport and logistics arranged by KOMPAN appointed forwarder. Products/items are not to be stored outside waiting for installation and must be kept dry at all times.



Scan here to book
a meeting with a
local representative



Sales Proposal

Boxborough, MA Park and Rec
Hilary Greven
29 Middle Road
Boxborough, MA 01719

Quote No. SP158491-4
Customer No. C013479
Document Date 10/03/2025
Expiration Date 12/02/2025

Sales Representative Perry Trachten
Email PerTra@Kompan.com

Project Name US327354 Flerra Meadows (Part 2) - Boxborough, MA

No.	Description	Qty	Unit	Unit Price	Discount %	Net Price
<u>Massachusetts State Contract #FAC122</u>						
EQUIPMENT ONLY - OPT 2						
<u>PCT110931-CUSTOM</u>	PCT110931 VARIANT GIANT L 20410433	1	Pieces	133,510.00	10.00	120,159.00
						
<u>KSW926-CUSTOM</u>	Custom - Swing Frame , 6 Seat, 8 ft H 20359512	1	Pieces	8,730.00	10.00	7,857.00
						
FREIGHT	Freight	1	Pieces	8,557.60		8,557.60

This quote is for equipment only. No site work, surfacing or installation is included.

Customer is responsible for safety surfacing appropriate to the max fall height of equipment.

Please allow 14 to 16 weeks for product delivery upon order placement.

Equipment is as per Flerra Meadows Opt 2 Site Plan K1.0-2 REV. Date 10.02.2025

Description	Qty	Retail Price	Discount	Net Price
No. of Products	2			
Subtotal - Products		142,240.00	14,224.00	128,016.00
Subtotal - Freight		8,557.60		8,557.60
Total USD				136,573.60

Business Agreement FAC 122 Massachusetts State Contract

KOMPAN, INC. | 605 W Howard Lane Ste 101 | Austin, TX 78753 | USA | Phone No. 1-800-426-9788
E-Mail Contact@KOMPAN.com | www.KOMPAN.us

SWIFT Code NDEAUS3N (Nordea Bank, NY | Bank Account No. USD 718 155 3001 | Routing No. 026010786)

Sales Proposal

Boxborough, MA Park and Rec
Hilary Greven
29 Middle Road
Boxborough, MA 01719

Quote No.	SP158491-4
Customer No.	C013479
Document Date	10/03/2025
Expiration Date	12/02/2025

Sales Representative	Perry Trachten
Email	PerTra@Kompan.com

Project Name US327354 Flerra Meadows (Part 2) - Boxborough, MA

Payment Terms Net 30 days

Installation Site Address

Flerra Meadows
Flerra Playground
400 Stow Road
Boxborough, MA 01719

Sales Proposal

Boxborough, MA Park and Rec
Hilary Greven
29 Middle Road
Boxborough, MA 01719

Quote No. SP158491-4
Customer No. C013479
Document Date 10/03/2025
Expiration Date 12/02/2025

Sales Representative Perry Trachten
Email PerTra@Kompan.com

Project Name US327354 Flerra Meadows (Part 2) - Boxborough, MA

Note that the color and texture of products and surfacing made with recycled content are subjected by the differences from the used recycled raw materials. Therefore, minor differences in the appearance and texture can occur.
Applicable sales tax will be added unless a valid tax exemption certificate is provided. This amount is only an estimate of your tax liability.
Your acceptance of this proposal constitutes a valid order request and includes acceptance of terms and conditions contained within this Master Agreement, which is hereby acknowledged.
Acceptance of this proposal from KOMPAN is acknowledged by issuance of an order confirmation by an authorized KOMPAN representative.
Prices in this quotation are good until expiration date, shown in the top of this document. After that date, this proposal may be withdrawn.
Prevailing Wage and Payment & Performance Bonds are not included unless stated in body of Sales Proposal. If Payment & Performance Bonds are needed, add 2.2% of the entire sales proposal.

This information required for order placement:

Accepted By (Please Print): _____

Accepted By (Title): _____

Accepted By (signature): _____

Date: _____

Date Equipment needed on site: _____

Bill To: _____

Ship To: _____

Address: _____

Address: _____

City, State, Zip: _____

City, State, Zip: _____

Contact: _____

Contact: _____

Contact Email: _____

Contact Email: _____

Contact Phone (Office): _____

Contact Phone (Office): _____

Contact Phone (Cell): _____

SALES TAX EXEMPTION CERTIFICATE #: _____

(PLEASE PROVIDE A COPY OF CERTIFICATE)

Sales Proposal

Boxborough, MA Park and Rec
Hilary Greven
29 Middle Road
Boxborough, MA 01719

Quote No. SP158496-2
Customer No. C013479
Document Date 10/03/2025
Expiration Date 12/02/2025

Sales Representative Perry Trachten
Email PerTra@Kompan.com

Project Name US327354 Flerra Meadows (Part 2) - Boxborough, MA

No.	Description	Qty	Unit	Unit Price	Discount %	Net Price
<u>Massachusetts State Contract #FAC122</u>						
SURFACING - OPT 2						
US-EWF-CUSTOM	Supply EWF and FF	366	Cubic Yard	43.17	10.00	14,220.20
INSTALL SURFACING	Installation of EWF and FF	366	Cubic Yard	38.46	10.00	12,668.72
US-SAFETY MATS ADA	ADA Safety Mats	164	Pieces	134.26	10.00	19,816.78
	Includes Freight					
INSTALL SURFACING	Installation of ADA Mats	164	Pieces	72.31	10.00	10,672.96

Please read attached General Assumptions and
Exclusion document for information on
Install/Sitework.

Excludes sitework, products, & services not listed.

Assumes site to be accessible & install ready.

Equipment is as per Flerra Meadows Opt 2 Site Plan
K1.0-2 REV. Date 10.02.2025

Description	Qty	Retail Price	Discount	Net Price
No. of Products	164			
Subtotal - Products		22,018.64	2,201.86	19,816.78
Subtotal - Surfacing		41,735.42	4,173.54	37,561.88
Total USD				57,378.66

Business Agreement FAC 122 Massachusetts State Contract
Payment Terms Net 30 days

Sales Proposal

Boxborough, MA Park and Rec
Hilary Greven
29 Middle Road
Boxborough, MA 01719

Quote No.	SP158496-2
Customer No.	C013479
Document Date	10/03/2025
Expiration Date	12/02/2025

Sales Representative	Perry Trachten
Email	PerTra@Kompan.com

Project Name US327354 Flerra Meadows (Part 2) - Boxborough, MA

Installation Site Address

Flerra Meadows
Flerra Playground
400 Stow Road
Boxborough, MA 01719

Sales Proposal

Boxborough, MA Park and Rec
Hilary Greven
29 Middle Road
Boxborough, MA 01719

Quote No. SP158496-2
Customer No. C013479
Document Date 10/03/2025
Expiration Date 12/02/2025

Sales Representative Perry Trachten
Email PerTra@Kompan.com

Project Name US327354 Flerra Meadows (Part 2) - Boxborough, MA

Note that the color and texture of products and surfacing made with recycled content are subjected by the differences from the used recycled raw materials. Therefore, minor differences in the appearance and texture can occur.
Applicable sales tax will be added unless a valid tax exemption certificate is provided. This amount is only an estimate of your tax liability.
Your acceptance of this proposal constitutes a valid order request and includes acceptance of terms and conditions contained within this Master Agreement, which is hereby acknowledged.
Acceptance of this proposal from KOMPAN is acknowledged by issuance of an order confirmation by an authorized KOMPAN representative.
Prices in this quotation are good until expiration date, shown in the top of this document. After that date, this proposal may be withdrawn.
Prevailing Wage and Payment & Performance Bonds are not included unless stated in body of Sales Proposal. If Payment & Performance Bonds are needed, add 2.2% of the entire sales proposal.

This information required for order placement:

Accepted By (Please Print): _____

Accepted By (Title): _____

Accepted By (signature): _____

Date: _____

Date Equipment needed on site: _____

Bill To: _____

Ship To: _____

Address: _____

Address: _____

City, State, Zip: _____

City, State, Zip: _____

Contact: _____

Contact: _____

Contact Email: _____

Contact Email: _____

Contact Phone (Office): _____

Contact Phone (Office): _____

Contact Phone (Cell): _____

SALES TAX EXEMPTION CERTIFICATE #: _____

(PLEASE PROVIDE A COPY OF CERTIFICATE)

Sales Proposal

Boxborough, MA Park and Rec
Hilary Greven
29 Middle Road
Boxborough, MA 01719

Quote No. SP158550-3
Customer No. C013479
Document Date 10/06/2025
Expiration Date 12/05/2025

Sales Representative Perry Trachten
Email PerTra@Kompan.com

Project Name US327354 Flerra Meadows (Part 2) - Boxborough, MA

No.	Description	Qty Unit	Unit Price	Discount %	Net Price
<u>Massachusetts State Contract #FAC122</u>					
INSTALL - OPT 2					
INSTALL SPECIAL	Installation of KOMPAN Equipment Prevailing Wages Apply	1 Pieces	77,500.00	10.00	69,750.00

Please read attached General Assumptions and
Exclusion document for information on
Install/Sitework.

Excludes sitework, products, & services not listed.

Assumes site to be accessible & install ready.

Equipment is as per Flerra Meadows Opt 2 Site Plan
K1.0-2 REV. Date 10.02.2025

Description	Retail Price	Discount	Net Price
Subtotal - Installation	77,500.00	7,750.00	69,750.00
Total USD			69,750.00

Business Agreement FAC 122 Massachusetts State Contract
Payment Terms Net 30 days

Installation Site Address

Flerra Meadows
Flerra Playground
400 Stow Road
Boxborough, MA 01719



Sales Proposal

Boxborough, MA Park and Rec
Hilary Greven
29 Middle Road
Boxborough, MA 01719

Quote No. SP158550-3
Customer No. C013479
Document Date 10/06/2025
Expiration Date 12/05/2025

Sales Representative Perry Trachten
Email PerTra@Kompan.com

Project Name US327354 Flerra Meadows (Part 2) - Boxborough, MA

Note that the color and texture of products and surfacing made with recycled content are subjected by the differences from the used recycled raw materials. Therefore, minor differences in the appearance and texture can occur.

Applicable sales tax will be added unless a valid tax exemption certificate is provided. This amount is only an estimate of your tax liability. Your acceptance of this proposal constitutes a valid order request and includes acceptance of terms and conditions contained within this Master Agreement, which is hereby acknowledged.

Acceptance of this proposal from KOMPAN is acknowledged by issuance of an order confirmation by an authorized KOMPAN representative. Prices in this quotation are good until expiration date, shown in the top of this document. After that date, this proposal may be withdrawn. Prevailing Wage and Payment & Performance Bonds are not included unless stated in body of Sales Proposal. If Payment & Performance Bonds are needed, add 2.2% of the entire sales proposal.

This information required for order placement:

Accepted By (Please Print): _____

Accepted By (Title): _____

Accepted By (signature): _____

Date: _____

Date Equipment needed on site: _____

Bill To: _____

Ship To: _____

Address: _____

Address: _____

City, State, Zip: _____

City, State, Zip: _____

Contact: _____

Contact: _____

Contact Email: _____

Contact Email: _____

Contact Phone (Office): _____

Contact Phone (Office): _____

Contact Phone (Cell): _____

SALES TAX EXEMPTION CERTIFICATE #: _____

(PLEASE PROVIDE A COPY OF CERTIFICATE)